

### Features

- 3 in 1 compact power entry modules with filtered
- IEC950 appliance inlet
- Screw mount
- Current rating 1A~10A
- With IEC950 appliance inlet and fuse holder and switch

### Marketing Applications

- Safety tester
- Automated optical inspection (AOI)
- SMPS
- Medical device (not body-coupled)
- Portable electrical and electronic equipment

### Numbering System

**1** SS6 **A** - **2** **3** **4** **5** **6** - **7** **B** **8**

#### 1 Rated current

01,02,04,06,10

#### 2 Type of module

**B1**: socket + switch + single fuse holder  
**B2**: socket + switch + double fuse holders

#### 3 Electrical schematic

**A**: general purpose; **B**: high performance

#### 4 Components value (refer Filter selection table)

**H**: Cx=0.22uF

#### 5 Grounded choke (optional)

**G**: Lg= 400uH

#### 6 Bleeder resistor (optional)

**R**: R= 1M ohm; 1/4W min.

#### 7 Output connections (refer Output terminal)

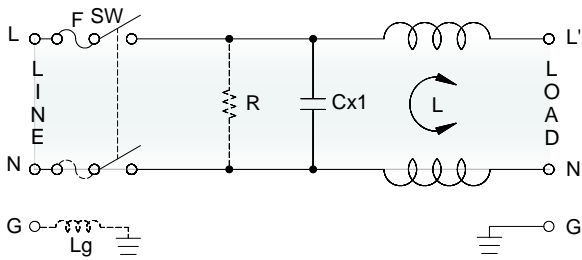
**Q**: fast-on tab (6.3mm)

#### 8 Type of switch

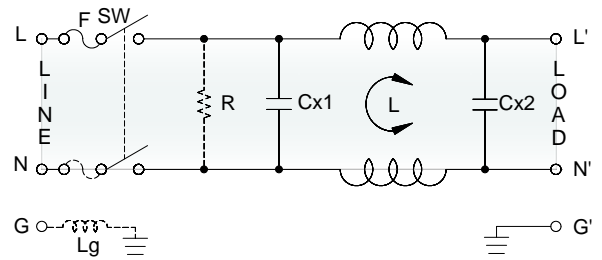
**B**: switch with black rocker  
**R**: switch with illuminated red rocker  
**G**: switch with illuminated green rocker

### Electrical Schematic •

#### • **A**: general purpose

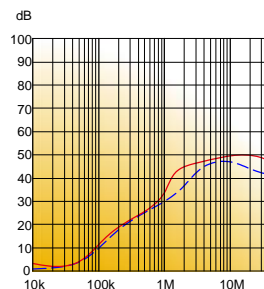


#### • **B**: high performance

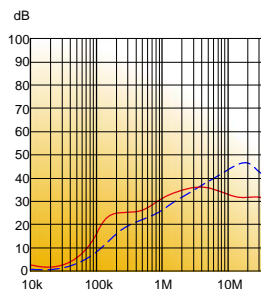


### Filter Attenuation Insertion loss (dB) in 50 ohm system CISPR 17 (for reference only)

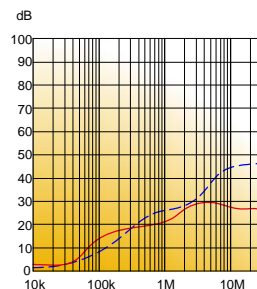
#### 1A~3A



#### 4A~6A



#### 8A~10A



Common mode / Asymmetric (L-G) ————  
 Differential mode / Symmetric (L-L) - - - - -

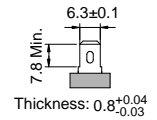
## Filter Selection Table ●

Filter Part No.	Rated Current @50°C [A]	Leakage Current @250VAC/50Hz [μA]	Inductance @10KHz, 0.25V [mH]	Capacitance		
				Cx1 [μF]	Cx2 [μF]	Cy [nF]
<b>A: general purpose</b>						
01SS6A-.AH..-QB.	1	5	7.5	0.22	—	—
02SS6A-.AH..-QB.	2	5	5.5	0.22	—	—
04SS6A-.AH..-QB.	4	5	2	0.22	—	—
06SS6A-.AH..-QB.	6	5	0.8	0.22	—	—
10SS6A-.AH..-QB.	10	5	0.4	0.22	—	—
<b>B: high performance</b>						
01SS6A-.BH..-QB.	1	5	7.5	0.22	0.22	—
02SS6A-.BH..-QB.	2	5	5.5	0.22	0.22	—
04SS6A-.BH..-QB.	4	5	2	0.22	0.22	—
06SS6A-.BH..-QB.	6	5	0.8	0.22	0.22	—
10SS6A-.BH..-QB.	10	5	0.4	0.22	0.22	—

## Output Terminal

(unit: mm)

- Q: fast-on tab based on UL310 standard



## Mechanical Drawing (unit: mm) ●

- screw mount | horizontal

