

Features

- Standard conducted attenuation performance
- Single stage power line filter
- Current rating 1A~30A
- Various output connections
- Practical solution for general devices

Marketing Applications

- Single-phase power supplies
- Data storage
- Broadcast installations
- Network technology
- Medical device (not body-coupled)

Numbering System

1 SS4 - 2 3 - 4 5 - 6

1 Rated current

01,03,06,10,15,20,30

2 Electrical schematic

1A,1B

3 Type of case (refer Mechanical drawing)

A1: for 1~10A

A2: for 1~20A

A3: for 1~30A

4 Components value (refer Filter selection table)

B: $C_x=0.1\mu F$, $C_y=3.3nF$

Blank: $C_x=0.22\mu F$, $C_y=3.3nF$

5 Bleeder resistor (optional, refer Filter selection table)

R

6 Output connections (refer Output terminal)

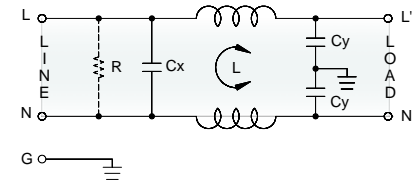
Q: fast-on tab (6.3mm)

S: screw (M4)

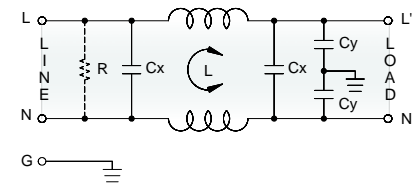
W: with wired (100mm)

Electrical Schematic

● 1A



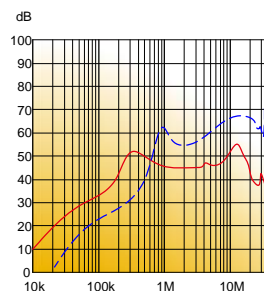
● 1B



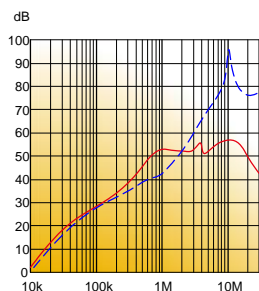
Filter Attenuation

Insertion loss (dB) in 50 ohm system CISPR 17 (for reference only)

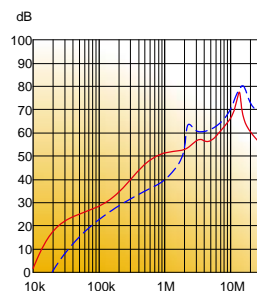
■ 1A~3A



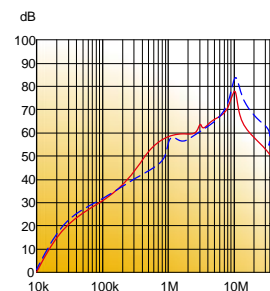
■ 6A~10A



■ 15~20A






■ 30A



Common mode / Asymmetric (L-G) ————
 Differential mode / Symmetric (L-L) - - - - -

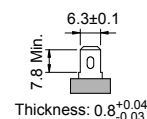
Filter Selection Table ●

Filter Part No.	Rated Current @50°C [A]	Leakage Current @250VAC/50Hz [μA]	Inductance @10KHz, 0.25V [mH]	Capacitance		Resistor R [Ω]	Output terminal		
				Cx [μF]	Cy [nF]				
1A:									
01SS4-1AA1-B.	1	600	10	0.1	3.3	1M	-Q	-	-W
03SS4-1AA1-B.	3	600	1.2	0.1	3.3	1M	-Q	-	-W
06SS4-1AA2-B.	6	600	0.8	0.1	3.3	1M	-Q	-S	-W
10SS4-1AA2-B.	10	600	1	0.1	3.3	1M	-Q	-S	-W
15SS4-1AA2-B.	15	600	0.8	0.1	3.3	1M	-Q	-S	-W
20SS4-1AA3-B.	20	600	0.7	0.1	3.3	1M	-Q	-S	-W
30SS4-1AA3-B.	30	600	0.3	0.1	3.3	1M	-Q	-S	-W
1B:									
01SS4-1BA2-.	1	600	10	0.22	3.3	2.2M	-Q	-S	-W
03SS4-1BA2-.	3	600	2	0.22	3.3	2.2M	-Q	-S	-W
06SS4-1BA2-.	6	600	0.8	0.22	3.3	2.2M	-Q	-S	-W
10SS4-1BA2-.	10	600	1.2	0.22	3.3	2.2M	-Q	-S	-W
15SS4-1BA3-.	15	600	0.9	0.22	3.3	2.2M	-Q	-S	-W
20SS4-1BA3-.	20	600	0.7	0.22	3.3	2.2M	-Q	-S	-W
30SS4-1BA3-.	30	600	0.3	0.22	3.3	2.2M	-Q	-S	-W

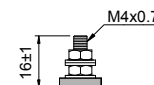
Output Terminal

(unit: mm)

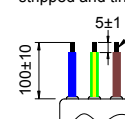
- **Q:** fast-on tab based on UL310 standard



- **S:** screw based on ISO4032 standard

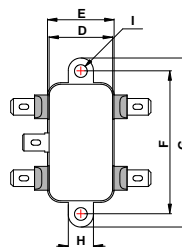
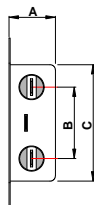


- **W:** with wired stripped and tinned



Mechanical Drawing (unit: mm) ●

- A type



Case	A1	A2	A3
A	17.5	30	30
B	27	21.2	28.1
C	44	43.5	52
D	24	32.5	46
E	26	35	48
F	54.1	54	61
G	64.5	64	71
H	9.5	10	10
I	2-Ø4.8	2-Ø5.3x6.3	