

# SCE SHZ DATASHEET



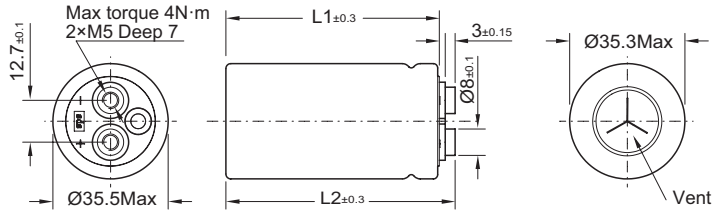
MODEL	SCE SHZ SERIES
PART NUMBER	SCE0360C0-0002R7SHA
	SCE0600C0-0002R7SHZ
	SCE0700C0-0002R7SHZ

Version	Revision of historical records
V2018-2L	

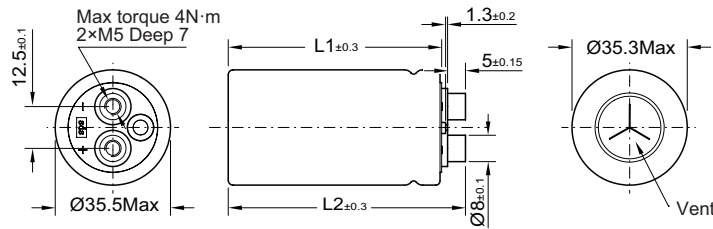
FEATURES
Threaded connection
Low ESR
Over 1000,000 duty cycles

APPLICATIONS
Pitching control system of Wind Turbine Generator
UPS and backup power supply
Electronic tools and police flash lights

## DIMENSIONS



PART NUMBER	DIMENSION(MM)	
	L1	L2
SCE0360C0-0002R7SHA	62.2	67
SCE0600C0-0002R7SHZ	96.2	101



PART NUMBER	DIMENSION(MM)	
	L1	L2
SCE0700C0-0002R7SHZ	96.2	103.9

## SPECIFICATIONS

Items	Characteristics
Operating Voltage	2.7 VDC
Surge Voltage	2.85 VDC
Operating Temperature Range	-40°C to 65°C
Capacitance Tolerance	0% to +20% (25°C)

## SPECIFICATIONS

Temperature Performance(-40°C to 65°C )	$\Delta C \leq 5\%$ of initial measured value@ 25°C $\Delta ESR \leq 50\%$ of specified value
Life (1,500 hours @ 65°C , 2.7 VDC)	$\Delta C \leq 20\%$ of initial measured value $\Delta ESR \leq 50\%$ of initial measured value
Cycle life (1,000,000 cycles between $V_R$ and $1/2 V_R$ )	$\Delta C \leq 20\%$ of initial measured value $\Delta ESR \leq 50\%$ of initial measured value

## STANDARD PRODUCT

CAP (F)	Part Number	ESR (mΩ)		LC (mA, RT 72hrs)	Max. Energy Stored (Wh)	Max. Energy Density (Wh/Kg)	Max. Continuous Current (15/40°C ,A)	Max. Peak Current (A)	Typical Thermal Resistance (Housing) °C /W	Typical Thermal Capacitance, Cth, J/°C	Typical Mass (g)
		AC @ 1kHz	DC								
360	SCE0360C0-0002R7SHA	2.1	2.9	0.5	0.36	4.7	22/35	238	10.9	81	77
600	SCE0600C0-0002R7SHZ	2.0	2.8	1.5	0.61	5.2	27/43	302	7.6	133	117
700	SCE0700C0-0002R7SHZ	2.0	2.8	1.5	0.71	6.0	27/43	319	7.6	133	118

Product dimensions are for reference only unless otherwise identified. Product dimensions and specifications may change without notice.

### SPSCAP Europe GmbH

Add: Ziegelstraße 1, 83629 Weyarn, Germany  
 Tel: +49 8020 9086688  
 Email: europe@spscap.com  
 Website: www.spscap.com